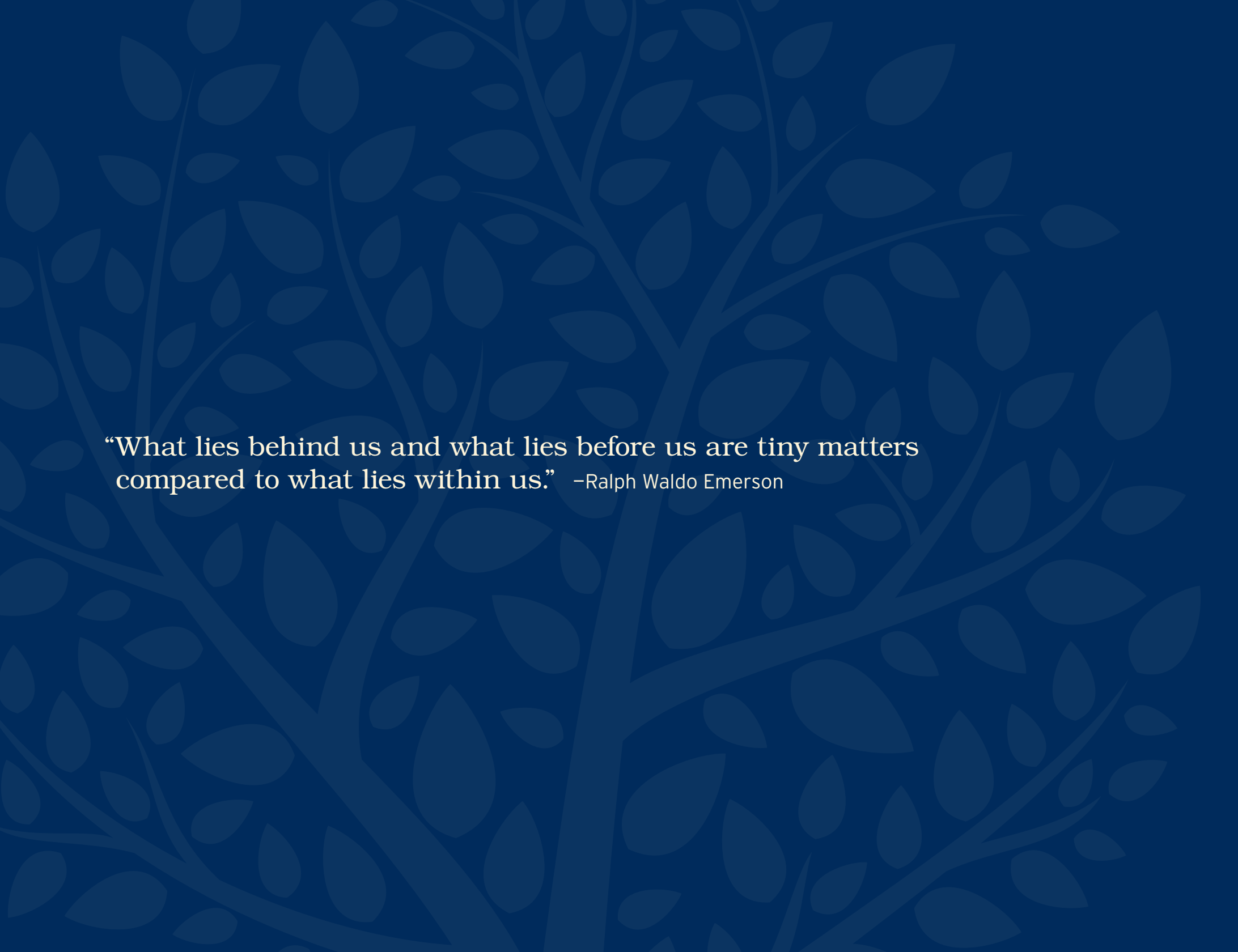




Building for a
Lifetime
THE CAMPAIGN FOR ST. LOUIS ARC



St. Louis
Arc



“What lies behind us and what lies before us are tiny matters compared to what lies within us.” –Ralph Waldo Emerson

CONTENTS

- 4 The St. Louis Arc: Leading the Way
- 8 60 Years of Quality and Leadership
- 14 The Challenges We Face
- 18 Our Vision for the Future
- 22 The Building for a Lifetime Campaign

The St. Louis Arc began in 1950 as a small group of families who simply wanted to provide recreation and social opportunities for their children. Today, the St. Louis Arc is the region's leading provider of services to people with developmental disabilities and their families. With a growing demand in the community, we are poised to increase our capacity to meet the needs of people who rely on us for high-quality services, family support and advocacy.



In the early days, the St. Louis Arc was a grassroots organization of parents who believed their children could live fulfilling lives out in the community rather than shuttered away in institutions.

THE ST. LOUIS ARC: LEADING THE WAY



Sue Engelhardt
Co-Chair



Michael Neidorff
Co-Chair

What began in 1950 with a small group of families seeking opportunities for their children has since grown into the **St. Louis area's most comprehensive provider of services to people with Down syndrome, autism and other developmental disabilities.** From recreation and sports activities, to residential assistance and respite care, to job training and community awareness—and much more—the St. Louis Arc is making a meaningful difference in the lives of those we serve.

Now, the St. Louis Arc is entering a new phase in our growth.

Today's real estate market has made it possible for us to purchase our own spacious building.

The new facility will allow us to not only continue providing the services already in place, but also to develop innovative new programs that impact hundreds—if not thousands—more lives.

Our plans for the future are inspiring and, in these times of limited funding and growing need, critical. For this reason, the St. Louis Arc has launched our “Building for a Lifetime” Campaign to renovate our newly purchased building at 1177 Warson Road into space for our family support services and administrative offices. At 25,000 square feet, this two-story building more than doubles the St. Louis Arc's previous space. Its location on a major thoroughfare and bus route now makes the Arc an easy-to-find destination with a more visible and accessible presence.

In addition, the Arc's Board of Directors has established a long-range strategic goal of increasing our endowment to \$6 million over the next four years. Ultimately, the endowment will provide an ongoing revenue stream that will ensure our programs are sustained and remain vital.

To achieve these goals, we are seeking help from generous donors in the community. With their support, the St. Louis Arc will remain the safe place to which the people we serve continue to come for support and guidance throughout their lives.



Taylor & Cindy Pennington

“The day Taylor came into our lives, we knew we were very, very lucky,” says Cindy Pennington about her 3-year-old daughter.



The Penningtons learned about the St. Louis Arc’s Respite program from a friend who also had a child with Down syndrome. When they enrolled, they learned services weren’t just for Taylor. Big brother Drew signed up for the Arc’s SibShops, designed for kids who have a special needs sibling. He quickly found support and encouragement from peers sharing the same experiences.

“Finding the St. Louis Arc was just wonderful for our family,” says Cindy. “The feelings we had the day Taylor was born are now replaced with feelings of hope and joy knowing that we are not alone in our journey.”

60 YEARS OF QUALITY AND LEADERSHIP

Sixty years ago, the small group of families looking to better the lives of their children followed their hearts and in so doing established the foundation from which the St. Louis Arc has grown.

Today, we are an organization of **450 dedicated staff members and 500 volunteers** who provide high-quality programs, leadership and advocacy for more than 3,000 people in the St. Louis community.

Although our name has changed several times through the years, one thing has remained constant: we continue as the region's most comprehensive provider of services to people with Down syndrome, autism and other developmental disabilities.

From our earliest work in opening education and recreation opportunities to today's commitment to high-quality, person-centered programs, the St. Louis Arc has always been at the vanguard of innovative services for people with disabilities. **For every phase of life, the Arc responds with a service designed to make a meaningful difference for the person and their family.**

FOR CHILDREN: Inclusive childcare and early intervention services

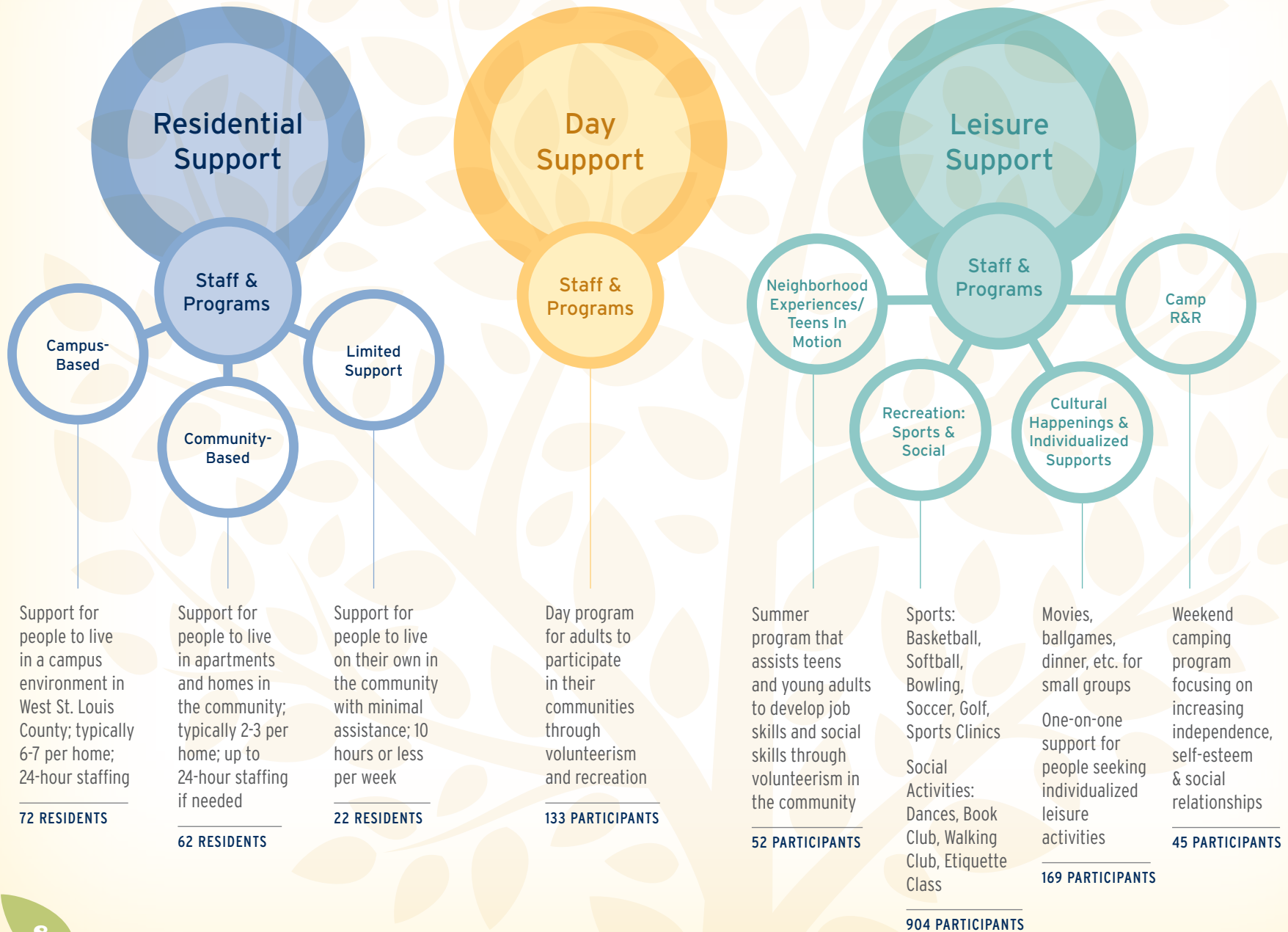
FOR YOUTH AND ADULTS: Support to live, work and play in the community

FOR THE COMMUNITY: Leadership, training and public awareness

FOR FAMILIES: Respite services, family education and advocacy



St. Louis Arc: Support for a Lifetime





Support for people to find, learn and maintain paid employment; includes assessment, job coaching & retention

172 PARTICIPANTS



Support to help students gain work experience prior to high school graduation

39 PARTICIPANTS



Short-term relief for families caring for child or adult with a disability. Arc provides reimbursement for services

1,168 FAMILIES RECEIVED 289,983 HOURS OF RESPITE



Parenting support and education for people who have developmental disabilities and are raising children

60 PARENTS AND 130 CHILDREN



Early intervention program providing a lending library of therapeutic toys & equipment; and support services and resources for parents

52 FAMILIES



Workshop Series: advocacy, planning, legal issues, etc.
Sibshops: peer support for siblings
Networking Opportunities

338 FAMILIES



Education and awareness aimed at reducing the incidence of Fetal Alcohol Syndrome (FAS)

DIRECT PRESENTATIONS TO 28,880 PEOPLE SINCE 2005; BROADER REACH THROUGH MEDIA



Early intervention and inclusive childcare program; in-home therapy services; jointly operated with UCP Heartland

308 CHILDREN



LOWE'S
HOME IMPROVEMENT WAREHOUSE

LOWE'S

Improving Home Improvement

LOWE'S

Improving Home Improvement

Gordon Manning

Mele Manning had one hope for her son Gordon. “I wanted his world to be as broad as it could be.” So when Gordon was 12 years old, Mele called the St. Louis Arc.

“The staff showed me a range of opportunities for Gordon,” Mele recalls.

Gordon participated in the Arc’s Neighborhood Experiences Project, which teaches teens vocational skills through volunteerism. The Arc’s Summer Work Experiences and Volunteer Venture programs came next.

“Gordon really benefited from the continuum of services,” said Mele.

Gordon is now 24, and with support from the Arc’s Employment Services, holds a job at Lowe’s. He has a full and very busy life.

“The Arc can take pride in Gordon,” says Mele. “They helped him break into the world.”



THE CHALLENGES WE FACE

An estimated 30,000 people in the metropolitan St. Louis area have some type of developmental disability. Of them, only 1,700 receive state-funded residential services. Given the economic conditions and funding limitations, it's clear that the government can't afford to pay for residential services for everyone who needs them. **Providing in-home supports to help people remain in their natural homes is the wave of the future.**

Parents face many challenges as they strive to care for a child with a developmental disability at home. The Arc's recent Family Needs Assessment survey revealed the magnitude of the issues confronting families today. As the demand for support continues to exceed our community's current capacity to respond, families are looking to the St. Louis Arc for affordable, high-impact services that will aid them in keeping their child at home.

CHALLENGE:

FAMILY SUPPORT SERVICES

In our survey, more than 800 families cited a dire need for any type of support that would help them care for their children in their home. Their “wish list” included respite care, education, resources, support groups, networking opportunities, advocacy, counseling, children’s play groups, leisure activities for their children—all services currently provided by the St. Louis Arc. Funding is our only limitation to the number of people we reach.

CHALLENGE: AUTISM

New data in regard to autism spectrum disorders document an alarming trend: The incidence of these disorders has risen from one out of 150 children to one out of 91 children in the United States. In the St. Louis area alone, that translates to more than 5,700 children with autism. Currently, the St. Louis Arc provides respite, recreation and other services to more than 500 people with autism, making us the second-largest provider of such services in Missouri. With funding from the community, the Arc could help meet the growing demand and provide hope to these children and families.

CHALLENGE:

TRANSITIONING TO ADULTHOOD

“What will my child do when school is over?” It’s the issue parents routinely face as they strive to help their children develop their potential to live independent, fulfilling lives as adults. When the structure of high school is over, parents find that resources and support become less available and less coordinated. There is a tremendous demand for creative approaches to programs that will prepare youth vocationally and socially for transition to adulthood.

CHALLENGE:

AN AGING POPULATION

The people we serve are getting older—as are their caregivers. Because adults with developmental disabilities are living longer, families have a longer period of caregiving responsibility. Older families become less able to provide care as parents and siblings deal with their own aging issues and other caregiving responsibilities. Important unmet service needs reported by older family caregivers are for assistance with residential, legal, and financial arrangements in addition to health care, vocational/leisure activities, and community supports.



Jurni Harper-Wood

Four days after Jurni Harper-Wood was born, doctors discovered he had extensive brain damage.

“They told me he wouldn’t have the life I wanted for him,” mother De’Ja explains, “but I wasn’t giving up on my son.”

De’Ja hired nurses and therapists, but finding the equipment Jurni needed proved difficult.

Then, De’Ja learned about the Arc’s Capable Kids and Families program. Parents in the program can check out therapeutic equipment free of charge. A family specialist visits each month and twice-monthly playgroups are also offered.

“We got evaluated and the rest is history,” says De’Ja. “They began meeting with us and brought new equipment each visit. They found options that have really helped Jurni.”

“The Arc has really gone the extra mile for us.”



Our Vision for the Future

Throughout the St. Louis Arc's history, the St. Louis community has turned to us for leadership and innovation. As we enter our sixth decade, the families we serve continue to have high expectations for the role we can play in ensuring that their loved ones have the best quality of life possible.

We have a simple yet ambitious vision for the future: **to be the organization families turn to for a lifetime of high-quality support, resources and advocacy.**

In order to achieve this vision, the Arc must significantly expand the types of services designed to support families as they care for their child at home. These services may be as intensive as one-on-one specialized therapy or as simple as helping parents connect with others who are dealing with similar issues.

In order to have a physical site for our expanded services, the Arc Board developed plans to create the St. Louis Arc Family Center—a place where families can come together to receive resources and services to help them care and advocate for their loved ones. By renovating a newly-purchased property at 1177 North Warson Road, we will double our previous leased space and establish a visible and accessible presence on a major thoroughfare and bus route.

The Family Center will be the hub of expanded services that will take place in the Center and throughout the community:

FOR CHILDREN,
we'll offer a therapeutic play area, a lending program for therapeutic equipment and toys, and autism-focused therapies

FOR TEENS AND YOUNG ADULTS, we'll have after-school and weekend activities, movie nights, cooking classes, wellness programs...as well as pre-vocational programs designed to prepare young adults for jobs

FOR FAMILIES,
we'll offer a family resource library, expanded educational trainings, support groups, networking opportunities and counseling services

AND IMPORTANTLY,
we'll also have space to grow, as new needs and opportunities arise

It's a challenging time for people with disabilities and the organizations that are here to help them. We're operating in an era of limited resources yet ever-growing demands. But this presents an opportunity for the St. Louis Arc to do what it has always done best: be a leader and an advocate, and respond with high quality, cost-effective services. And this also presents a great time for the community to step forward and invest in the Arc's capacity to ensure that people with developmental disabilities have the quality of life they deserve.



Amy Grunzinger

26-year-old Amy Grunzinger takes pride in her job at Schnucks. “I like the people I work with,” Amy says with a grin.

After Amy’s mother Nancy passed away, Amy’s siblings realized she needed to get out and become part of the community. “They had me contact the St. Louis Arc,” says her father, Tom.

Amy received an assessment from the Arc to gauge her job skill set and received coaching on interview skills. Once hired, Amy was paired with Arc employee Susan Sanders, who provided on-site support.

“As Amy became more familiar with her job, she needed less coaching,” says Sanders. “She now works independently and is completely accepted as a co-worker. That’s so great to see.”



THE BUILDING FOR A LIFETIME CAMPAIGN

The purpose of the “Building for a Lifetime” campaign is to develop the St. Louis Arc’s capacity to meet the growing need for services in the St. Louis community. The Arc Board and Campaign leadership have set **a goal of raising \$5 million** through this comprehensive campaign to achieve our vision for people with developmental disabilities.

CAMPAIGN PRIORITIES

INITIATIVE	COMMUNITY INVESTMENT	IMPACT
Purchase and renovation of 1177 N. Warson facility	\$3 million	Create new Family Center resource for the community Funds previously spent on lease will be directed to expanded programs
Endowment for Programs & Scholarships	\$2 million	Revenue generated from Endowment will allow us to enhance services and provide scholarship funds

HOW YOU CAN SUPPORT THE CAMPAIGN

There are many ways for donors to support the “Building for a Lifetime” campaign. Those who do will be partnering with the St. Louis Arc **to ensure that people with developmental disabilities have the best quality of life possible.**

CASH GIFTS AND MULTI-YEAR PLEDGES

Outright gifts of cash can be made by check or credit card. Donors may make a campaign gift as a pledge to be paid in installments over as many as five years.

DEFERRED AND PLANNED GIFTS

Bequests and gifts through life insurance, retirement plans and charitable remainder trusts—when properly structured—can count as major gifts towards the campaign. Gifts through estate planning to the Arc Endowment are a great way to create a lasting legacy.

GIFTS OF SECURITIES

Donating appreciated stocks or other securities can create a double tax benefit—a current income tax deduction and avoidance of capital gains taxes.

DONOR RECOGNITION

As a sincere gesture of our appreciation, we offer a variety of donor recognition opportunities for gifts of all levels, including signage in the new Family Center and naming opportunities.

NAMING OPPORTUNITIES

Gifts to the Building For A Lifetime campaign may be recognized through the naming of selected spaces at the St. Louis Arc's new Family Center. Donors may also be interested in creating a named scholarship fund within the Arc Endowment.

For more information about these naming opportunities, or to discuss other recognition possibilities, **please contact the St. Louis Arc's Advancement Office at (314) 817-2240.**



Family Center Building	\$ 750,000
Front Lobby & Family Resource Area	\$ 500,000
Community Training Room	\$ 350,000
Board/Conference Room	\$ 250,000
Children's Play Room	\$ 250,000
Program/Activities Room	\$ 150,000
Children's Outdoor Play Area	\$ 100,000
Front Outside Garden Area	\$ 100,000
Accessible Elevator	\$ 75,000
Program Classrooms (2)	\$ 50,000
Family Counseling Rooms (2)	\$ 50,000
Computer Training Room	\$ 50,000
Side Outside Garden Area	\$ 25,000
President/CEO's Office	\$ 25,000
Job Training Room	\$ 25,000
Conference Room–2nd Floor	\$ 25,000
Educational Kitchen Island	\$ 15,000
Kitchen/Break Rooms (2)	\$ 15,000
Vice President & Director's Offices (11)	\$ 10,000

